



RE_STILE

RE_STILE

1200X2600

1200X2700

*RE_STILE è costituita dalla lastra ceramica di base.
RE_STILE is made up of a base ceramic slab.*

PLUS

Superficie igienica

Hygienic surface

Idoneo al contatto
con alimenti

Suitable for contact
with foodstuffs

Superficie compatta,
(assorbimento
d'acqua 0,1% valore
medio)

Impervious
surface,
(water absorption 0,1%
average value)

Resistente al gelo

Resistant to freeze-thaw

Resistente all'umidità

Resistant to humidity

Resistente ai
raggi UV, nessuna
alterazione cromatica

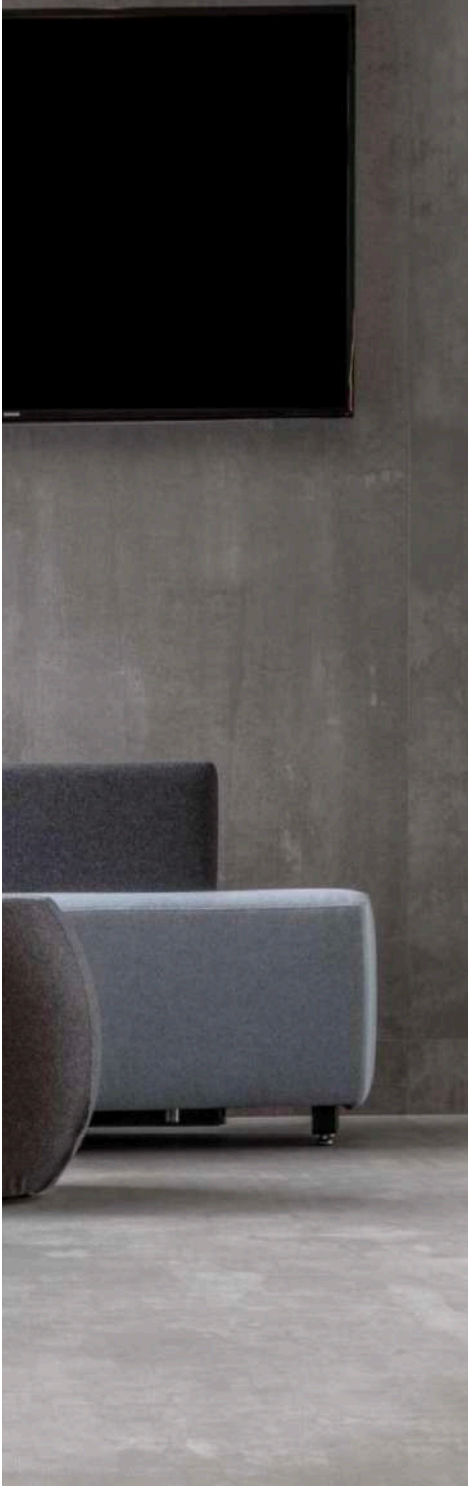
Resistant to UV rays,
no alteration
to colours

Resistente a prodotti
di pulizia e detergenti

Resistant to detergents
and cleaning products

Resistente alle
macchie

Resistant to
staining



PLUS

**Resistente a prodotti
chimici, acidi, basi e
solventi**

**Resistant to chemicals,
acids, alkalis
and solvents**

Stabilità dimensionale

Dimension Stability

**Idoneo sia in
ambiente interno che
esterno**

**Suitable for
indoor and outdoor
applications**

**Resistente al calore e
alle alte temperature**

**Resistant to heat and
high temperatures**

**Resistente alla
flessione**

**Resistant to
deflection**

**Resistente a graffi e
abrasioni**

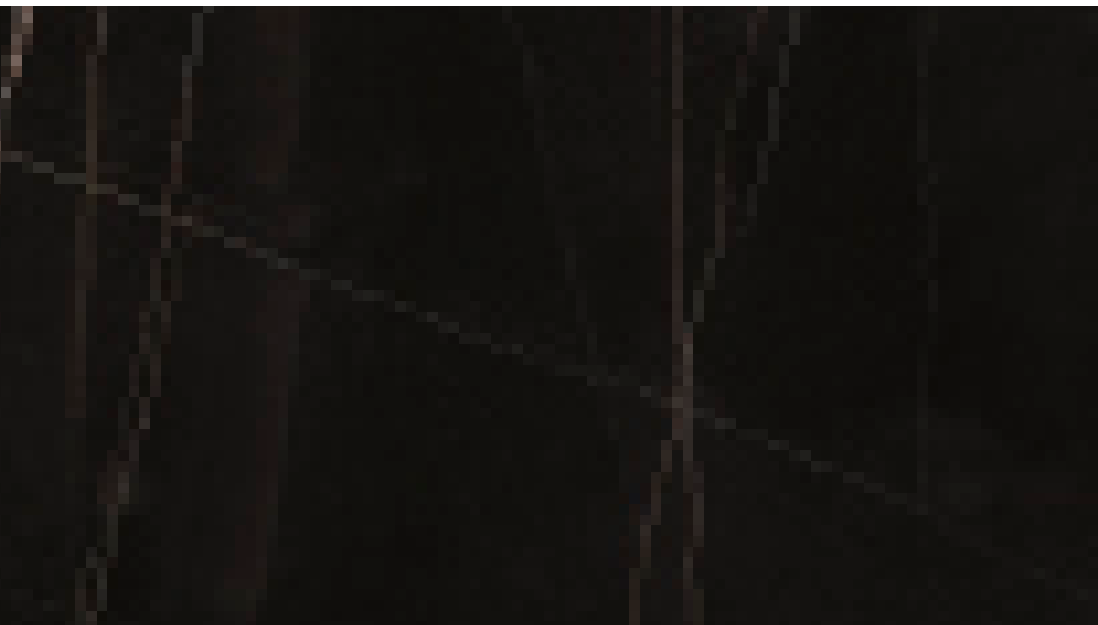
**Resistant to scratches
and abrasions**

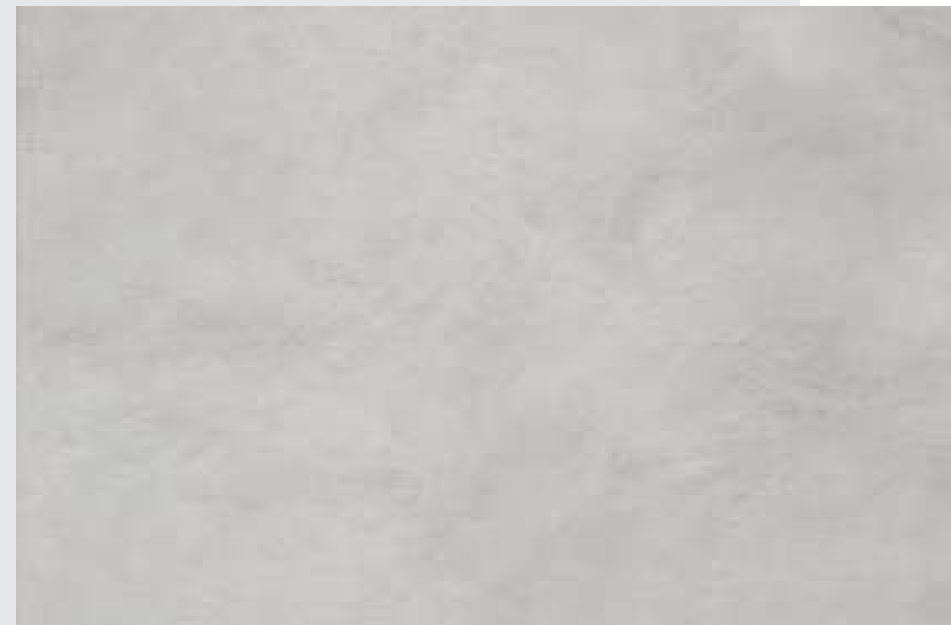
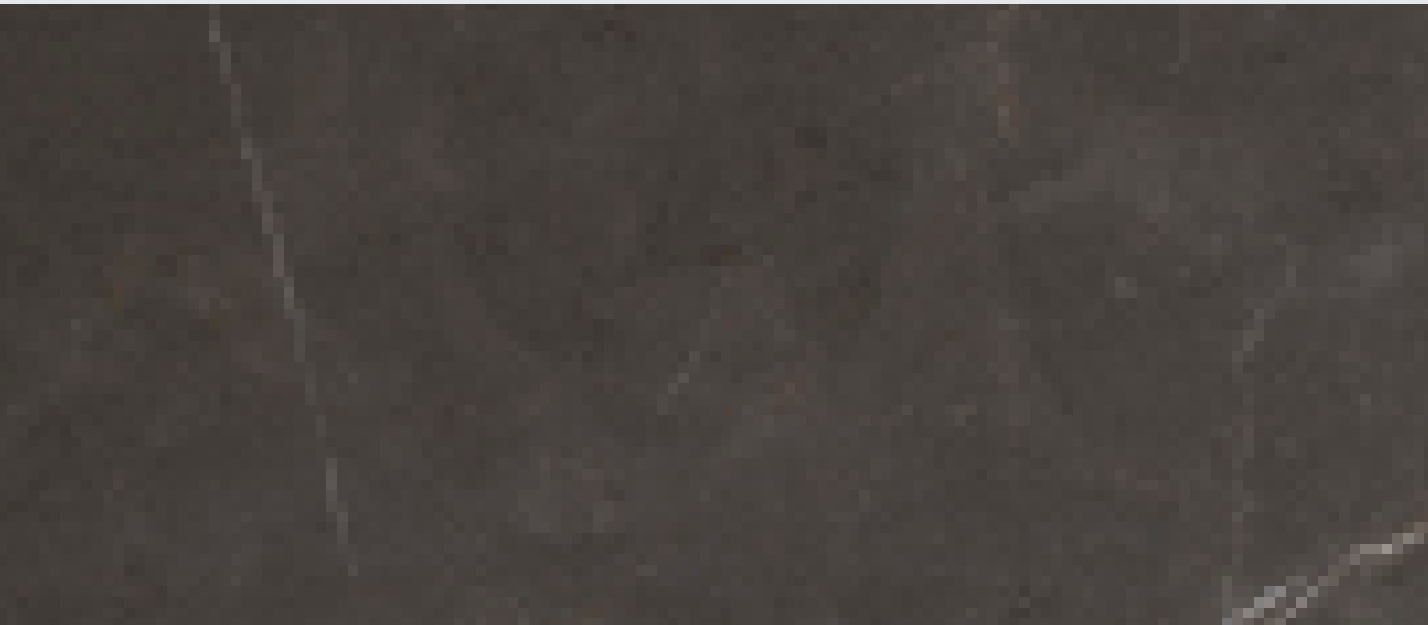
**Facilità di pulizia e
manutenzione**

**Easy to clean
and maintain**

**Resistente a funghi e
muffe**

**Resistant to mould and
fungi**





CALACATTA & CALACATTA LUCIDATO

1200x2600

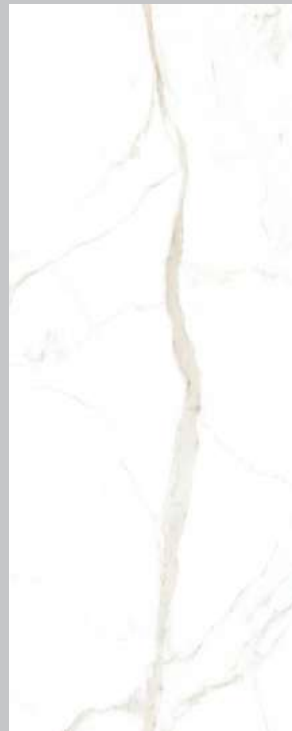
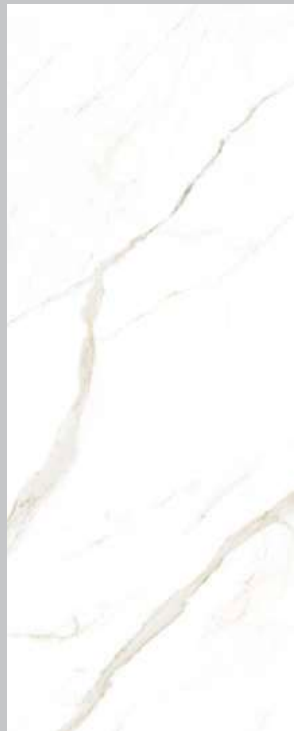
1200x2700

NATURALE/MAT - 007478

LUCIDATO - 00037

6 facce fornite in modo "random"

6 faces supplied randomly >



STATUARIO& STATUARIO LUCIDATO

1200x2600

1200x2700

NATURALE/MAT - 007477

LUCIDATO - 00465

6 facce fornite in modo "random"

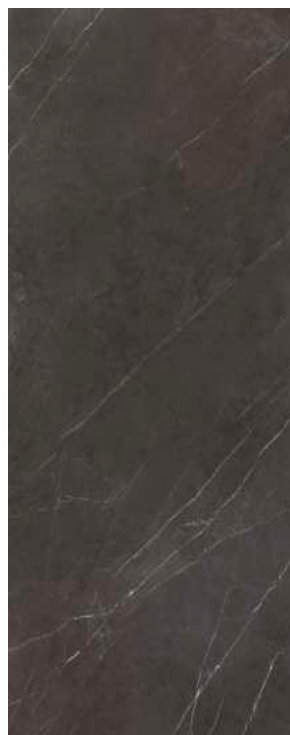
6 faces supplied randomly >



PIETRA GREY & PIETRA GREY LUCIDATO

1200x2600
1200x2700
NATURALE/MAT - 00101
LUCIDATO - 00467

4 facce fornite in modo "random"
4 faces supplied randomly >



SAHARA NOIR & SAHARA NOIR LUCIDATO

1200x2600

1200x2700

NATURALE/MAT - 007479

LUCIDATO - 00486

4 facce fornite in modo "random"

4 faces supplied randomly >



BEIGE

1200x2600
1200x2700
09372

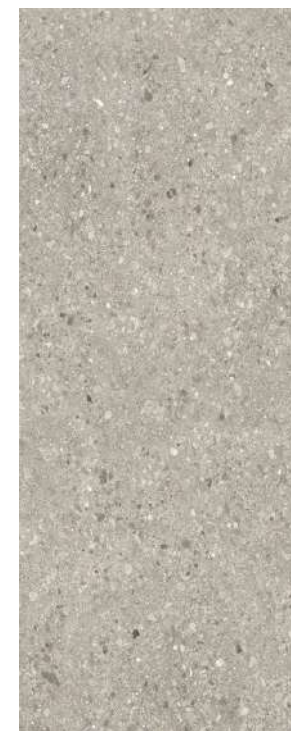
3 facce fornite in modo "random"
3 faces supplied randomly >

CEPPO DI GRE

GRIGIO

1200x2600
1200x2700
00112

3 facce fornite in modo "random"
3 faces supplied randomly >



IVORY

1200x2600
1200x2700
007481

3 facce fornite in modo "random"
3 faces supplied randomly >

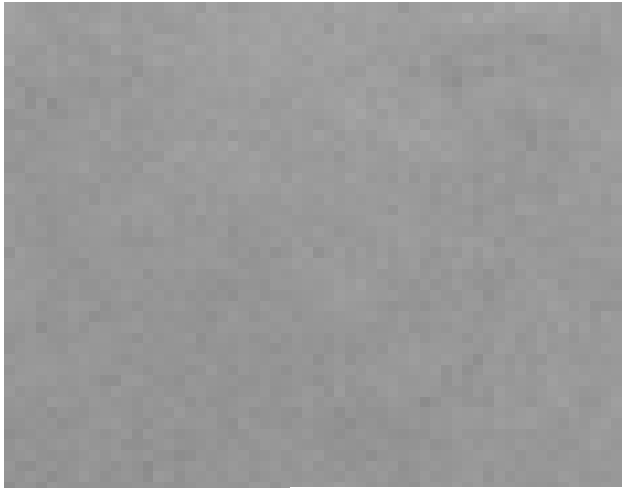
CORTON

GREY

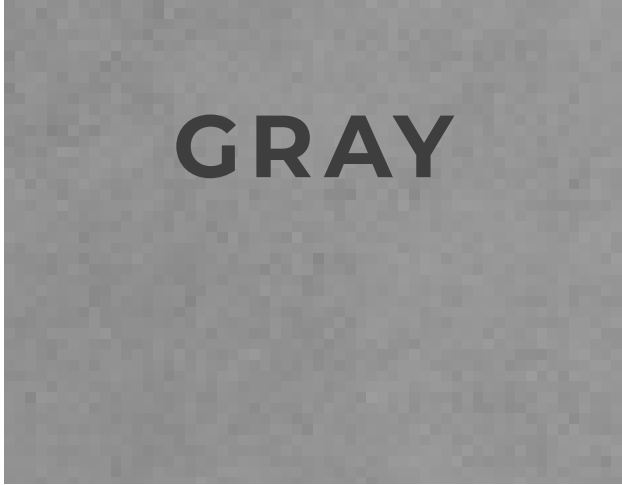
1200x2600
1200x2700
007598

3 facce fornite in modo "random"
3 faces supplied randomly >





LIVING



GRAY

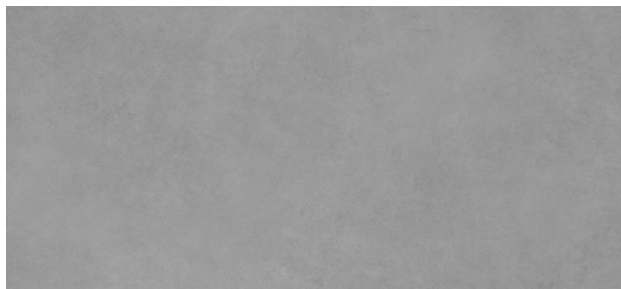
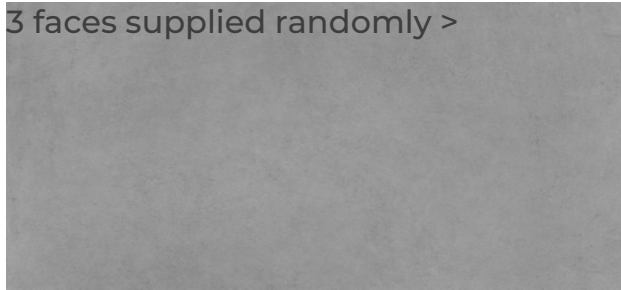
PEARL

TAUPE

GREY

1200x2600
1200x2700
007483

3 facce fornite in modo "random"
3 faces supplied randomly >



PEARL

1200x2600
1200x2700
007482

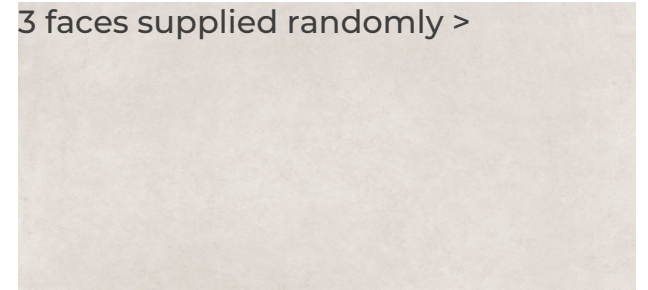
3 facce fornite in modo "random"
3 faces supplied randomly >



TAUPE

1200x2600
1200x2700
007486

3 facce fornite in modo "random"
3 faces supplied randomly >





IMBALLAGGI E CONFEZIONI / PACKING AND PACKAGES

Formato nominale/mm Nominal size/inch	pz x vassoio pcs per crate	mq x vassoio sqm x crate	kq x mq kg per sqm	kq x vassoio kg x crate	dim.vassoio/ mm crate size/ inch
1200x2600x6 mm 47.2"x102.3"x0.24"	20	62,40	14,9	1008,00	1370x2750x280h 53.9"x108.3"x11.4"
1200x2700x6 mm 47.2"x106.2"x0.24"	20	64,80	14,9	1063	1370x2866x280h 53.9"x112.8"x11.4"

*vassoi di legno FAO / FAO wooden crate (suitable for overlapping)

CARICO PER CONTAINER / LOADING PER CONTAINER

1200x2600x6 mm 47.2"x102.3"x0.24"		container ISO 20"	container ISO 40"	dim.vassoio / mm crate size
vassoi caricabili / crates for loading	NR	14	28	1370x2750x280h 53.9"x108.3"x11.4"
lastre caricabili / slabs for loading	NR	280	560	
mq caricabili / sqm for loading	NR	873,6	1747,2	
peso tot lastre + imballo / slabs tot weight + packing	NR	14.000	28.000	

1200x2700x6 mm 47.2"x106.2"x0.24"		container ISO 20"	container ISO 40"	dim.vassoio / mm crate size
vassoi caricabili / crates for loading	NR	14	25	1370x2866x280h 53.9"x112,8"x11.4"
lastre caricabili / slabs for loading	NR	280	500	
mq caricabili / sqm for loading	NR	907,2	1620	
peso tot lastre + imballo / slabs tot weight + packing	NR	14.882	26.500	



Durocem Italia S.r.l.
Via B.Croce 3
Castellarano (RE)



durocem.it
+390536078255